

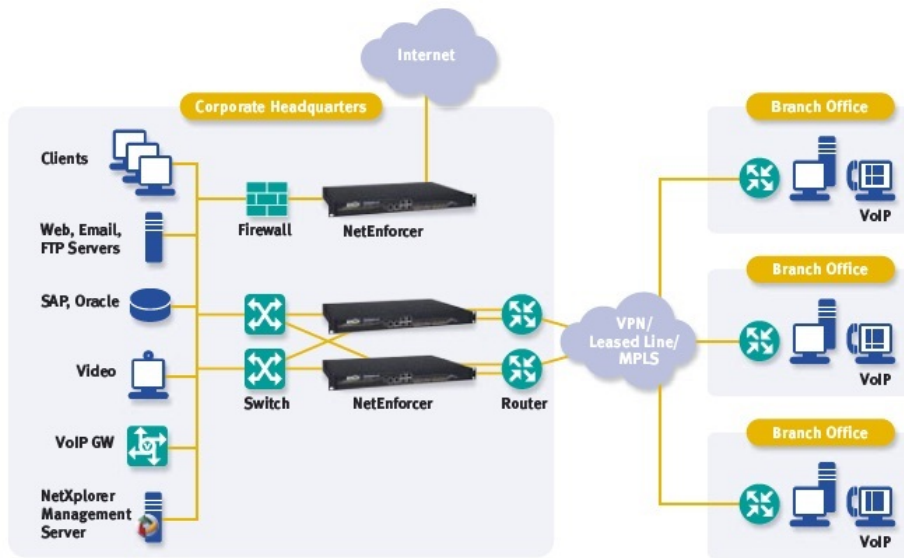
NetEnforcer[®] AC-500

400 Mbps Bandwidth Management Device

Allot NetEnforcer[®] AC-500 is designed to manage Internet traffic on multiple Ethernet links at speeds of up to 200 Mbps full duplex. These flexible devices bring carrier-class functionality and reliability to enterprise networks by providing real-time monitoring, reporting and policy enforcement.

Main Features

- Throughput of 10, 45, 100, and 200 Mbps (full duplex) with real-time monitoring and QoS management of up to 256,000 concurrent IP flows
- Interface options support a variety of network topologies:
 - 2 x 10/100/1000Mbps Ethernet ports (1 link) + 2 ports for cascading, high availability
 - 4 x 10/100/1000Mbps Ethernet ports (2 links) + 4 ports for cascading, high-availability
- Powered by Allot's Dynamic Actionable Recognition Technology (DART) engine, which provides granular visibility of user, application, and network topology traffic
- DART's extensive signature library accurately identifies hundreds of Internet applications and protocols, including P2P, VoIP, streaming, gaming, instant messaging, web and enterprise applications
- Automated, web-based update keeps the signature library up to date with the latest developments
- Supports user-defined signatures based on HTTP attributes, as well as monitoring reports based on custom HTTP signatures
- Real-time traffic monitoring and automatic alarms enable fast and accurate troubleshooting with the ability to trigger corrective actions
- Integrated URL filtering service blocks access to blacklisted and illegal web sites at the network level (see Allot WebSafe)
- Use with Allot ServiceProtector to avoid DNS blacklisting; to isolate infected botnet hosts for clean-up; and for surgical mitigation of DDoS attacks.
- Managed by Allot NetXplorer centralized management system
- Fully integrated with Allot Subscriber Management Platform (SMP)



Specifications

The NetEnforcer AC-500 Series is available in two models serving a range of network configurations and needs.

	AC-502	AC-504
Capacity		
Throughput	400 Mbps (200 Mbps full duplex)	
Number of Connections/Flows	256,000	
Number of Subscribers	256,000	
Lines/Pipes/Virtual Channels	Up to 256 / 4096 / 32,768	
Interfaces and Connections		
Management Interface	10/100/1000BASE-T	
Network Interfaces (Internal / External)	2 x 10/100/1000BASE-T (auto-negotiation)	4 x 10/100/1000BASE-T (auto-negotiation)
Cascading/Redundancy	2 x 10/100/1000BASE-T	2 x 10/100/1000BASE-T
Console Port	Serial, RJ-45 Connector	
Examples of Application/Protocol Signatures Supported		
P2P	Including BitTorrent, eDonkey, Ares, Gnutella, Thunder, eMule, Vuze, Winny	
VoIP	Including Windows Live Messenger Voice, SIP, Skype, Yahoo Messenger Voice, GoogleTalk, Fring	
Gaming	Including World of Warcraft, Final Fantasy, Guitar Hero, Second Life, QQ Games, Lineage, CounterStrike, Call of Duty	
Instant Messaging/Chat	Including Windows Live Messenger, QQ, Yahoo Messenger, ICQ, STUN	
Web	Including HTTP Browsing, HTTPS, Mobile browsers	
Streaming	Including YouTube, RTMP, QQ live, PPStream, DailyMotion, HTTP Streaming, HTTP Audio, NetFlix, Facebook Streaming	
Networking Standards		
Traffic Encapsulation	Including L2TP, MPLS, PPPoE	
IPv6	Ready	
Product Options		
QoS Enforcement Levels	10, 45, 100 and 200 Mbps full duplex	
Monitoring and Reporting	Real-time and Long-term	
High Availability	Active Redundancy (1:1, 1+1)	
Management		

NetXplorer Centralized Management	Yes
Allot Subscriber Management Platform (SMP)	Fully integrated with Allot SMP for subscriber-application control
Full Integration with Network & Subscriber Services	
Allot TierManager and QuotaManager	For service tiering and quota management solutions
Allot ServiceProtector	For DDoS/outbound spam detection and mitigation solutions
Allot WebSafe	For URL filtering solutions
Allot MediaSwift	For media caching and video acceleration solutions
Dimensions	
Size / Weight	Standard 1U by 19" rack mount / 4.9 kg (10.8 lb)
Dimensions / Operating Temp	300mm x 440mm x 44mm (L x W x H) / 0 °C to 50 °C
Bypass	Internal
Power	
Input (AC)	100–240 VAC, 50/60Hz, 2A max
Power Consumption	90 W 100W
Heat Dissipation	308 BTU/hour
Safety and Certifications	
CE Conformity	Directive 2004/108/EC, Directive 2006/95/EC
Safety	UL 60950-1:2007 EN 60950-1:2006 / A11:2009 CAN/CSA-C22.2 No. 60950-1-07
EMC	European Directives 2004/108/EC & LVD 73/23/ EEC EN 55022: 2006 EN 55024:98 + A1: 2001 + A2: 2003 ETSI EN 300 386 V1.3.3:2005-04 FCC CFR 47 Part 15 Subpart B Industry Canada ICES-003:04; C108.8-M1983 VCCI Class A Technical Requirements, V-3/2001.04 Australia ACMA, AS/NZS CISPR22:2006
RoHS/WEEE Compliance	Directive 2002/95/EC (RoHS) Directive 2002/96/EC (WEEE)

About Allot Communications

Allot Communications Ltd. (NASDAQ: ALLT) is a leading provider of intelligent IP service optimization solutions for fixed and mobile broadband operators and large enterprises. Allot's rich portfolio of solutions leverages dynamic actionable recognition technology (DART) to transform broadband pipes into smart networks that can rapidly and efficiently deploy value added Internet services. Allot's scalable, carrier-grade solutions provide the visibility, topology awareness, security, application control and subscriber management that are vital to managing Internet service delivery, enhancing user experience, containing operating costs, and maximizing revenue in broadband networks.